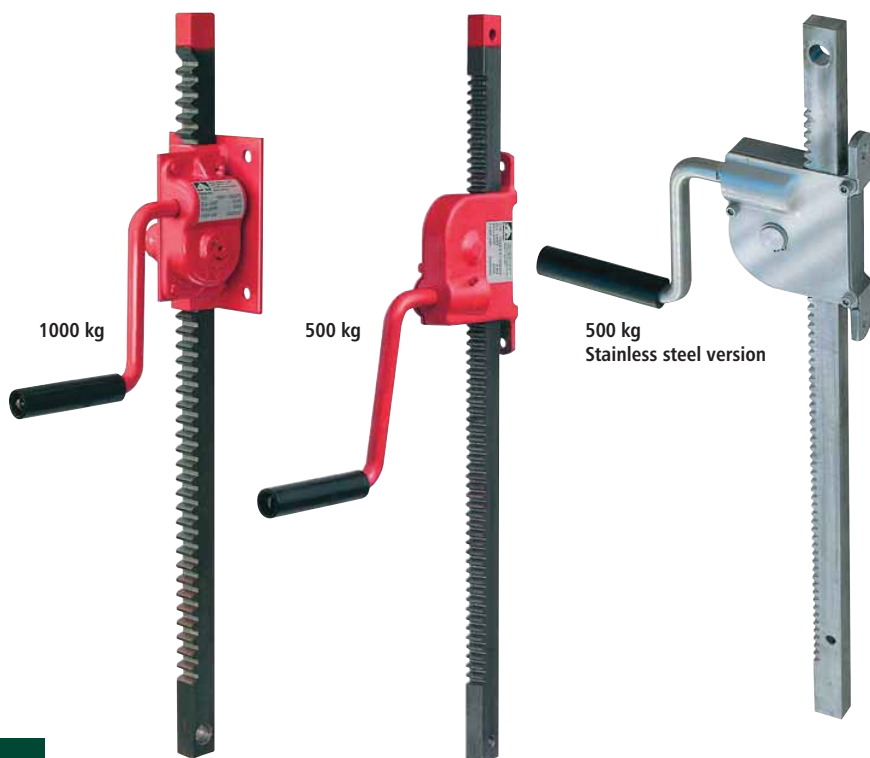




## WALL MOUNTED RACK & PINION JACKS 0.5 TO 1t CAPACITY



60

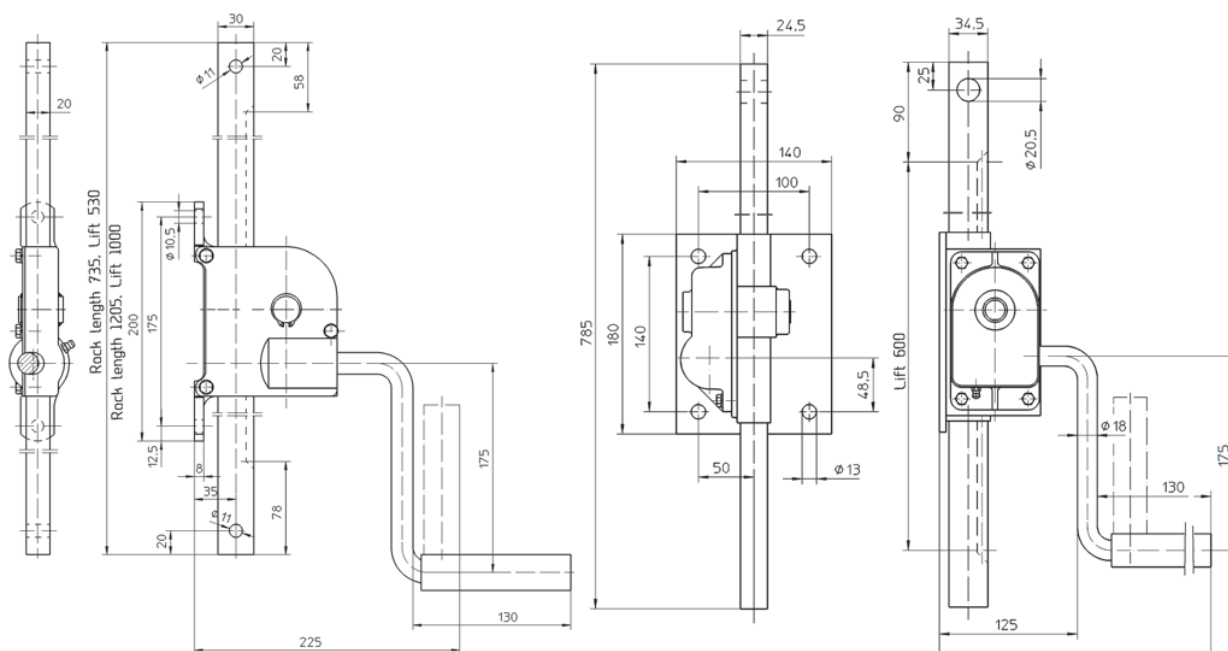
Rack & Pinion jacks for lifting, lowering, adjusting or fixing of mechanical components, machines, windows, sluice gates etc, Lifting capacity 0.5t – 1t

- Easy operation
- Robust version with milled rack and hardened drive parts, for indoor or outdoor applications (stainless steel versions available)
- Folding handle and self locking gears
- Painted finish

### Options:

- Various Lift height and rack lengths
- Alternate cranks
- Different surface finish - Standard units are painted
- Stainless steel units are available on request in 500 kg capacity with 530 or 1000 mm lift height

### DIMENSIONS (mm)



500 kg Jack

1000 kg Jack

# RACK & PINION JACKS 1.5T TO 10T



Rack & pinion jack for easy and secure lifting, lowering, adjusting, etc. in all kinds of applications

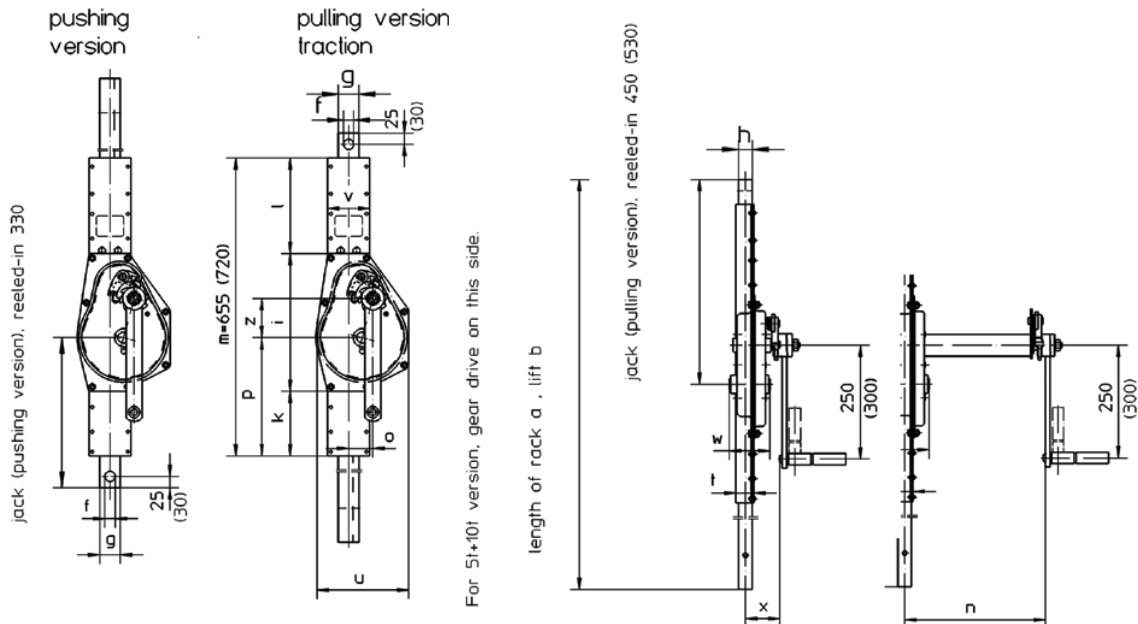
- Self locking crank, keeps the load in the required position
- Easy and effective operation through optimal gear ratio
- For pulling or pushing
- Load: 1.5 - 10 tonnes
- Special versions on request
  - Different rack lengths
  - Different lift heights
  - Drive shaft connected to several jacks together
  - With internal brake and removable crank
- Available in:
  - Simple rack and pinion jack
  - With bracket for wall mounting
  - With bracket and extended shaft



Product type 1624	Product type 1685	Capacity	Version	Rack length	Lift	Lift/crank turn
205 186	205 195	1.5 t	Pulling version	1350 mm	800 mm	13.9 mm
205 187	205 196	1.5 t	Pulling version	1805 mm	1250 mm	13.9 mm
205 188	205 197	1.5 t	Pulling version	2055 mm	1500 mm	13.9 mm
205 189	205 198	1.5 t	Pulling version	2355 mm	1800 mm	13.9 mm
205 285	207 685	1.5 t	Pushing version	950 mm	400 mm	13.9 mm
205 190	205 199	1.5 t	Pushing version	1350 mm	800 mm	13.9 mm
205 192	205 200	1.5 t	Pushing version	1805 mm	1250 mm	13.9 mm
205 193	205 201	1 t	Pushing version	2055 mm	1500 mm	13.9 mm
205 194	205 202	0.75 t	Pushing version	2355 mm	1800 mm	13.9 mm
205 203	205 209	3 t	Pulling version	1350 mm	800 mm	8.0 mm
205 204	205 210	3 t	Pulling version	1800 mm	1250 mm	8.0 mm
205 205	205 211	3 t	Pulling version	2350 mm	1800 mm	8.0 mm
205 286	210 356	3 t	Pushing version	950 mm	400 mm	8.0 mm
205 206	205 212	3 t	Pushing version	1350 mm	800 mm	8.0 mm
205 207	205 213	2.5 t	Pushing version	1800 mm	1250 mm	8.0 mm
205 208	205 214	1 t	Pushing version	2350 mm	1800 mm	8.0 mm
205 215	205 288	5 t	Pulling version	1405 mm	800 mm	3.9 mm
205 216	205 289	5 t	Pulling version	2400 mm	1800 mm	3.9 mm
205 287	210 669	5 t	Pushing version	1000 mm	400 mm	3.9 mm
205 217	205 290	5 t	Pushing version	1405 mm	800 mm	3.9 mm
205 218	205 291	3 t	Pushing version	2400 mm	1800 mm	3.9 mm
200 065	200 073	10 t	Pulling version	1450 mm	800 mm	4.0 mm
200 066	200 074	10 t	Pushing version	1450 mm	800 mm	4.0 mm

## DIMENSIONS (mm)

Capacity	f	g	h	ij	k	l	n	o	p	t	u	v	w	x	z
1.5 t	20.5	35	25	195	200	260	400	43.5	270	33.5	125	78	78	67	42.5
3 t	22.5	45	30	303	142	210	410	53	260	39.5	204	89	89	77	86
5 t	26	50	40	308	163	184	420	69.5	260	51	189	104	104	88	109
10 t	31	60	50	396	125	199	430	49	255	62.5	250	132	132	104	150.5





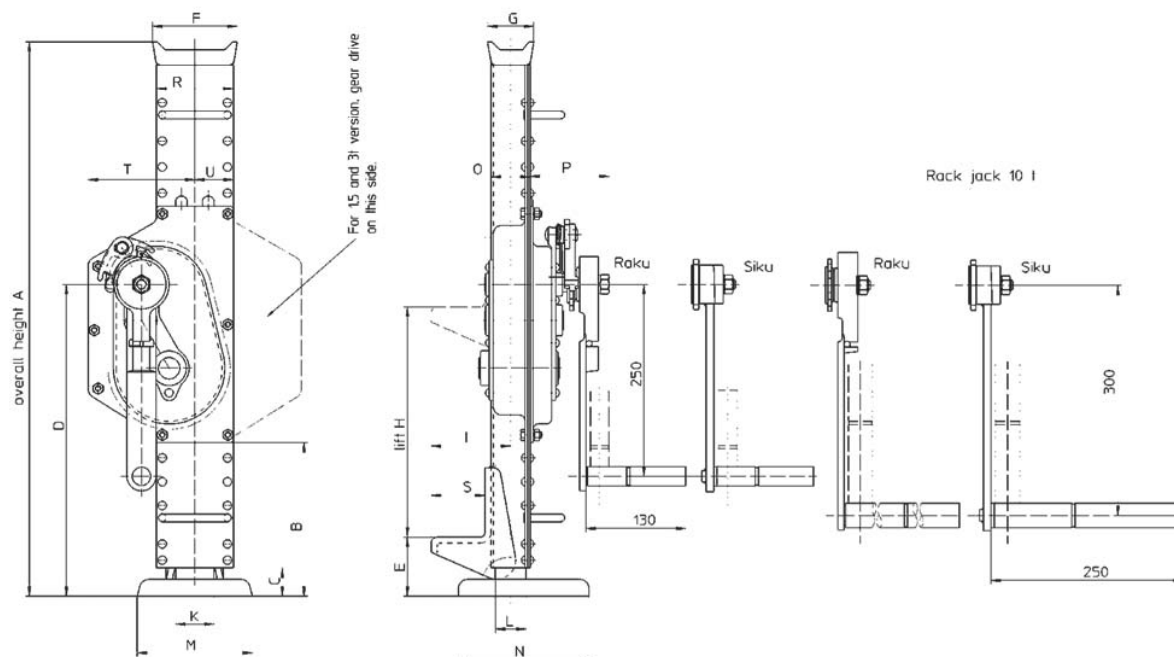
## RACK JACK (STEEL JACK)

Rack jack produced to DIN standards, with lifting housing and solid claw, allowing an easy lift of any load.

- Gears made of high quality hardened steel
- Easy and safe operation
- Loading on head or claw
- High stability due to a large ground plate
- Available with either SIKU safety cranks or RAKU ratchet cranks
- Proved safety system complying with the German safety regulations for lifting and pulling equipment BGV D8
- German manufacture

### Options:

- Short version for lower height (1.5, 3, 5 ton)



## DIMENSIONS (mm)

Capacity	Crank	A	B	C	D	E	F	G	H	I	K	L	M	N	O	P	R	S	T	U
1.5	Siku	725	237	37	350	70	100	50	350	84	35	25	130	140	33.5	108	78	60	86	39
1.5	Raku	725	237	37	350	70	100	50	350	84	35	25	130	140	33.5	108	78	60	86	39
3.0	Siku	725	182	40	387	79	100	50	350	92	45	30	130	140	39.5	94	92	65	132	72
3.0	Raku	725	182	40	387	79	100	50	350	92	45	30	130	140	39.5	94	92	65	132	72
3.0	Siku	722	200	37	406	77	110	60	300	104	50	40	150	170	51	105	100	70	139	50
5.0	Raku	722	200	37	406	77	110	60	300	104	50	40	150	170	51	105	100	70	139	50
10.0	Siku	797	167	42	448	82	125	70	300	128	60	50	150	170	62.5	115	132	85	184	66
10.0	Raku	797	167	42	448	82	125	70	300	128	60	50	150	170	62.5	115	132	85	184	66