

# HAACON DOUBLE SLUICE GATE JACK 1280.1,5, 1280.3, 1280.5, 1280.10

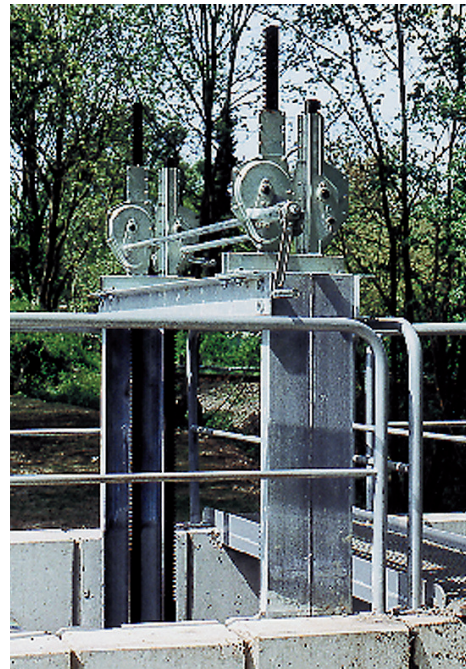


Double sluice gate drives to open and close sluice gates on canals and rivers.

- Self-locking crank keeps the load in every required position
- Easy and effective operation through optimal gear ratio
- Side or angular gear operation
- Optional: electric motor drive
- Capacity: 1,5 - 10 tonnes
- Dimensions individually adjusted to your requirements

## Options:

- Rack with protective cap
- Rack covered with fixed protective tube
- Various surface protection
- Electrically actuated



Technical data		1280.1,5	1280.3	1280.5	1280.10
Pulling force	kN	15	30	50	100
Pushing force	kN	15	30	50	50
Gear ratio	i	4,5	9,5	22,5	24,7
Crank force at max. pulling force	N	220	240	210	370
Lift / crank turn with side operation	mm	13,9	8	3,9	4
Lift / crank turn with anglar operation	mm	9,3	5,4	2,6	2,7
Lift, motor operated Haacon / Acuma	mm/min	973/876	560/604	273/246	280/252
Weight rack	kg/m	6,5	10	14,5	22
Weight without rack	kg	20	26	36	54

71

## DIMENSIONS (mm)

Type / dim.	A	C	D	E	F	G	H	J	K	L	M	N	Q	R	S	T	U	AW	ZR
1280.1,5	200	100	150	44	35	25	800	492		1520	13	94	100	78	125	80	20,5	180	75
1280.3	200	100	150	53	45	30	1000	526		1755	13	100	112	92	205	89	20,5	180	75
1280.5	250	170	220	70	50	40	1250	639		2170	13	131	125	100	189	109	26	270	110
1280.10	250	200	250	89	60	50	1500	676		2460	21	143	140	132	250	132	31	270	125

