

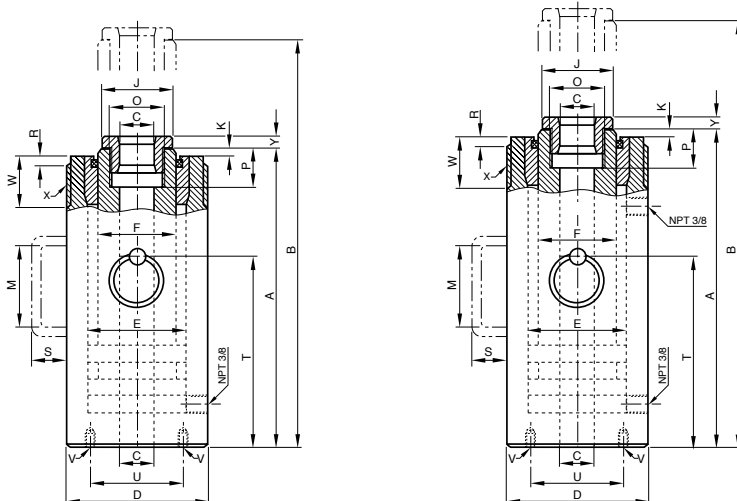
## Technical data model YCH

Cylinder size	Model	EAN-No. 4025092*	Capacity push	Capacity pull	Lift	Effective plunger area	Oil volume max.	Closed height	Centre hole diameter	Cylinder outside diameter	Weight
t			kN	kN	mm	cm <sup>2</sup>	cm <sup>3</sup>	mm	mm	mm	kg
33	YCH-33/150	*150965	335	180	150	47.9	716	310	33	114	19
33	YCH-33/250	*150972	335	180	250	47.9	1200	415	33	114	25
62	YCH-62/250	*150989	618	300	250	88.3	2220	452	55	163	55
93	YCH-93/250	*150996	930	450	250	133.0	3320	465	55	193	82
100	YCH-100/40	*151009	1000	500	40	143.0	578	190	55	200	38
140	YCH-140/200	*151016	1400	700	200	200.2	4080	383	80	253	115

For double-acting hollow cylinders the "capacity push" is equivalent to the max. pulling force achieved with tensioning anchor or threaded spindle.

## Dimensions model YCH

Model	YCH-33/150	YCH-33/250	YCH-62/250	YCH-93/250	YCH-100/40	YCH-140/200
A, mm	300	405	440	450	175	365
B, mm	450	655	690	700	215	565
C, mm	33	33	55	55	55	80
D, mm	114	114	163	193	200	253
E, mm	90	90	130	150	155	195
F, mm	67	67	105	120	125	160
J, mm	62	62	96	110	110	145
K, mm	3	3	5	5	5	5
M, mm	120	120	-	-	-	-
O, mm	M48 x 1.5	M48 x 1.5	M78 x 2	M85 x 2	M85 x 2	M115 x 2
P, mm	30	30	40	45	45	50
R, mm	5	5	5	5	-	-
S, mm	51	51	24	30	24	30
T, mm	-	-	290	290	115	240
U, mm	92	92	135	160	165	210
V, mm	4 x M10	4 x M10	4 x M12	4 x M16	4 x M16	4 x M16
W, mm	40	40	50	65	-	-
X, mm	M110 x 2	M110 x 2	M160 x 3	M190 x 3	-	-
Y, mm	10	10	12	15	15	18



Model YCH